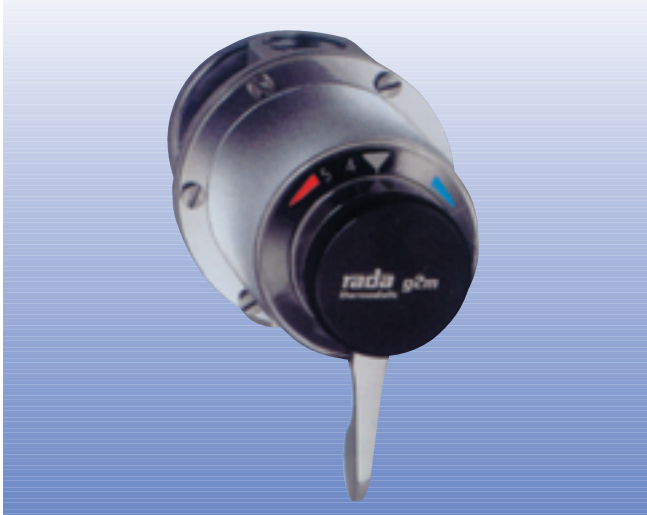
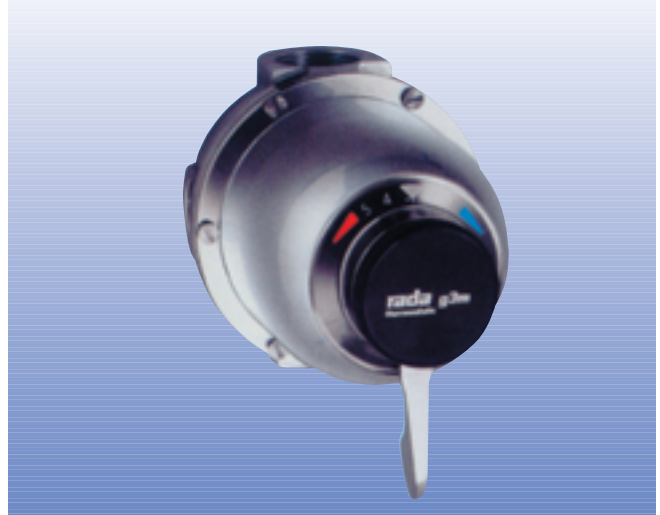


Rada g2M, g3M, 4M, a5 Thermostatic Mixing Valves for Hot and Cold Water

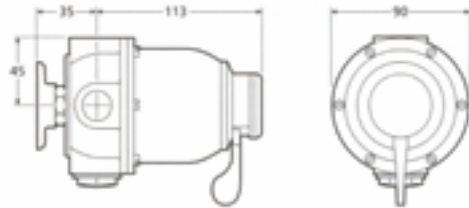
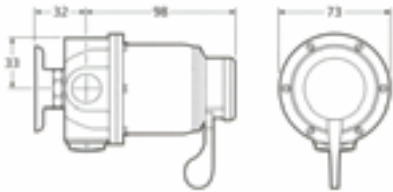


g2M



g3M

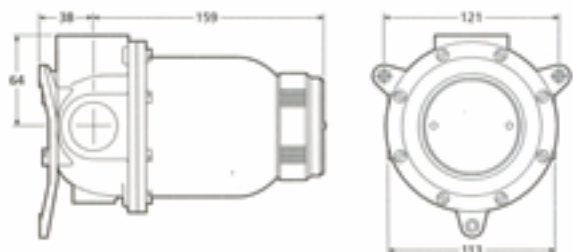
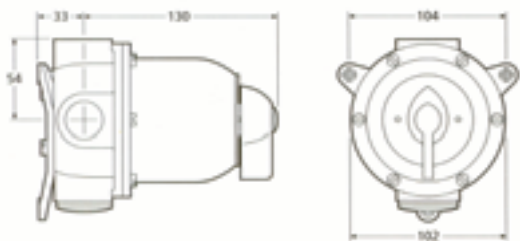
Dimensions (All dimensions in mm)



4M



a5



Pressure loss/flow rate chart

The chart shown below assumes maintained equal pressures with unrestricted outlet at mid-blend setting.

Bar	0.5	1	1.5	2	2.5	3	3.5	4	4.5	5	5.5	6	6.5	7	7.5	8
g2m	13	19	23	27	30	33	36	38	41	43	45	47	49	51	53	55
g3m	24	34	42	48	54	59	64	69	73	77	81	84	87	91	94	97
4m	45	66	78	92	105	115	125	135	143	150	156	162	168	172	176	180
a5	80	112	135	160	180	198	212	228	240	257	267	280	290	300	312	322

Approximate flow rate L/min

Our advice should be sought if there is any doubt as to the suitability of a Rada thermostatic hot and cold mixing valve for any specific condition.

Description

A range of thermostatic mixing valves which provide water at a controlled temperature for ablutionary or process requirements. The temperature control knob allows the user to select the required temperature, within the range available. An integral maximum temperature stop limits the temperature available to any desired level and can be only adjusted by an authorised person. Alternatively, all models can be supplied with a temperature locking set (as an optional extra) enabling the blended water to be set on site at a specific temperature, within the range.

Materials

Manufactured of copper alloys, visible surfaces chromium plated.

Connections

All connections have female threads to BS21:1957.

	g2M	g3M	4M	a5
Inlet	½"	½"	¾"	1"
Outlet	½"	¾"	1"	1¼"

Standard connections for the range are hot water entry on the left, cold right when facing the mixing valve.

The Rada g2M, g3M and 4M are supplied with top outlet. The a5 is available with either top or bottom outlet. (To be specified on ordering).

Fixing

All models are designed to be fitted exclusively in or on a vertical wall surface with the caps of the checkvalves facing upwards. Flow isolation should be provided on both supplies to facilitate any necessary maintenance. The inclusion of strainers on both inlets is recommended unless the cleanliness of the water supplies can be guaranteed.

To ensure satisfaction in use, the installation instructions, supplied with each product, must be complied with.

Temperature Range

Nominally, the temperature range is approximately equal to the temperatures of the incoming supplies, but the temperature range available to the user is limited to a pre-chosen maximum.

Pressure Range

Minimum: 0.15 bar

Maximum: 8.4 bar

Maximum pressure ratio 5:1 in favour of either supply.

Limitations in use

A single Rada thermostatic mixing valve should not be used to supply water to different types of outlet fittings (e.g. a bath and shower) or similar fittings on different floor levels.

Maintenance, Repairs and Replacements

Refer to separate Product Manuals for detailed instruction. For further information on replacement parts and services:

Tel: +44 1242 282527

Fax: +44 1242 282404

Technical Services

- Backed with expert Rada after sales support.
- Technical advice on all aspects of pre and post-installation.
- On-site surveys and technical support.
- Unrivalled experience and expertise in providing for the commercial washroom.