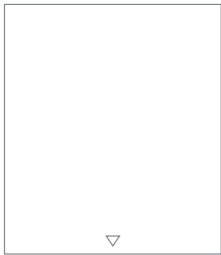


bobrick *fino* **collection** washroom accessories



BUILDING VALUE SINCE 1906

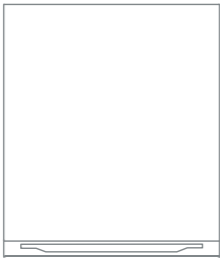
Bobrick, the global washroom accessory brand and Thrislington Cubicles, winners of multiple European design awards, have created the Fino Collection, an elevated design line of accessories. Crafted with high-quality satin finish stainless steel material, seamless construction, well-defined edges and concealed hardware. Fino offers the perfect balance of function and design sensibility.



hand dryer
page 5

High-speed hand dryer.
Width: 11 11/16" (297mm)
Height: 13 7/16" (342mm)
Depth: 3 15/16" (100mm)
ADA compliant.
Power consumption of 200 watts.
10-12 second dry time.
Type 304, 18 gauge (1.2mm), stainless steel.
Satin finish as standard.

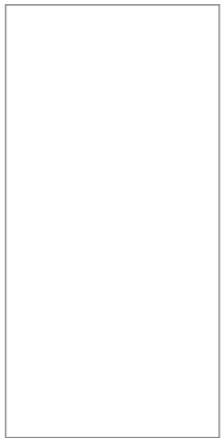
Models available:
● B-7179



towel dispenser
page 5

400 C-fold, 525 multifold.
Built in TowelMate®
Width: 11 11/16" (297mm)
Height: 13 7/16" (341mm)
Depth: 3 15/16" (100mm)
ADA compliant.
Type 304, 18 gauge (1.2mm), stainless steel.
Satin finish as standard.
Made in UK.

Models available:
● B-9262



waste receptacle
page 5

Width: 11 11/16" (297mm)
Height: 23 7/8" (607mm)
Depth: 6 1/8" (156mm)
Type 304, 18 gauge (1.2mm), stainless steel.
Satin finish as standard.
Made in UK.

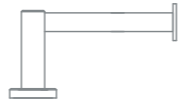
Models available:
● B-9279



coat hook
page 9

Width: 1 11/32" (34mm)
Height: 1 1/2" (37.5mm)
Depth: 2 1/2" (63.5mm)
Type 303 stainless steel.
Satin finish as standard.
Made in UK.

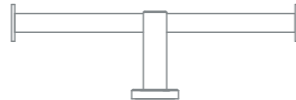
Models available:
● B-9542



single roll holder
page 9

Width: 5 5/8" (142.5mm)
Height: 1 11/32" (34mm)
Depth: 2 15/16" (75mm)
Type 303 stainless steel.
Satin finish as standard.
Made in UK.

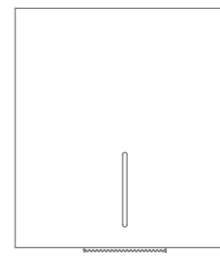
Models available:
● B-9543



double roll holder
page 9

Width: 10 1/2" (266mm)
Height: 1 11/32" (34mm)
Depth: 2 15/16" (75mm)
Type 303 stainless steel.
Satin finish as standard.
Made in UK.

Models available:
● B-9547



jumbo roll holder
page 9

Width: 11 11/16" (297mm)
Height: 12 3/4" (324mm)
Depth: 5" (128mm)
Type 304, 18 gauge (1.2mm), stainless steel.
Satin finish as standard.
Made in UK.

Models available:
● B-9890



grab bar
page 13

ADA/DDA compliant grab bars available in widths of 18", 24", 30", 36" and 42"
Tube: Type 303, 14 gauge (2mm) stainless steel.
Tube diameter: 1 1/2" (38.1mm)
Satin finish as standard.
Made in UK.

Models available:
● B-9806 / B-9807

washroom accessories

The Fino Collection Hand Dryer, Paper Towel Dispenser and Waste Receptacle all share the same width for a coordinated design. Its cubist simplicity adds a new level of sophistication to any restroom.



Year Guarantee



Made in UK

Hand Dryer B-7179

Specification: Stainless steel high-speed hand dryer with power consumption of 200 watts. GreenSpec certified and ADA compliant with less than 4" protrusion from the wall. CULus-listed and CE-marked.

Width: 11 11/16" (297mm)

Height: 13 7/16" (342mm)

Depth: 3 15/16" (100mm), ADA compliant.

Power: 110 – 240 volts 50/60 Hz

Current Consumption: 2.0 Amps @ 115 volts / 1.0 Amps @ 230 volts

Nominal Output: 0.2 kW

Drying Speed: 10-12 Seconds.

Control System: Automatic, infrared, no-touch.

Air: 34 m³/h, 50 m/s @ 100mm, 23°C @ 20°C ambient

Material: Type 304, 18 gauge (1.2mm), stainless steel.

Finish: Satin finish as standard.



Towel Dispenser B-9262

Specification: Stainless steel hand towel dispenser with flush lock. Proprietary design of built in TowelMate® ensures dispensing one towel at a time, reducing waste and towel usage by 20%.

Capacity: 400 C-fold or 525 multifold paper towels.

Towels: C-Fold or multifold paper towels.

Width: 11 11/16" (297mm)

Height: 13 7/16" (341mm)

Depth: 3 15/16" (100mm), ADA compliant.

Material: Type 304, 18 gauge (1.2mm), stainless steel.

Finish: Satin finish as standard.

Made in: UK.



Waste Receptacle B-9279

Specification: Stainless steel waste receptacle.

Capacity: 6 Gal (23-L)

Waste Container: Removable, leakproof, rigid moulded plastic.

Width: 11 11/16" (297mm)

Height: 23 7/8" (607mm)

Depth: 6 1/8" (156mm), ADA compliant.

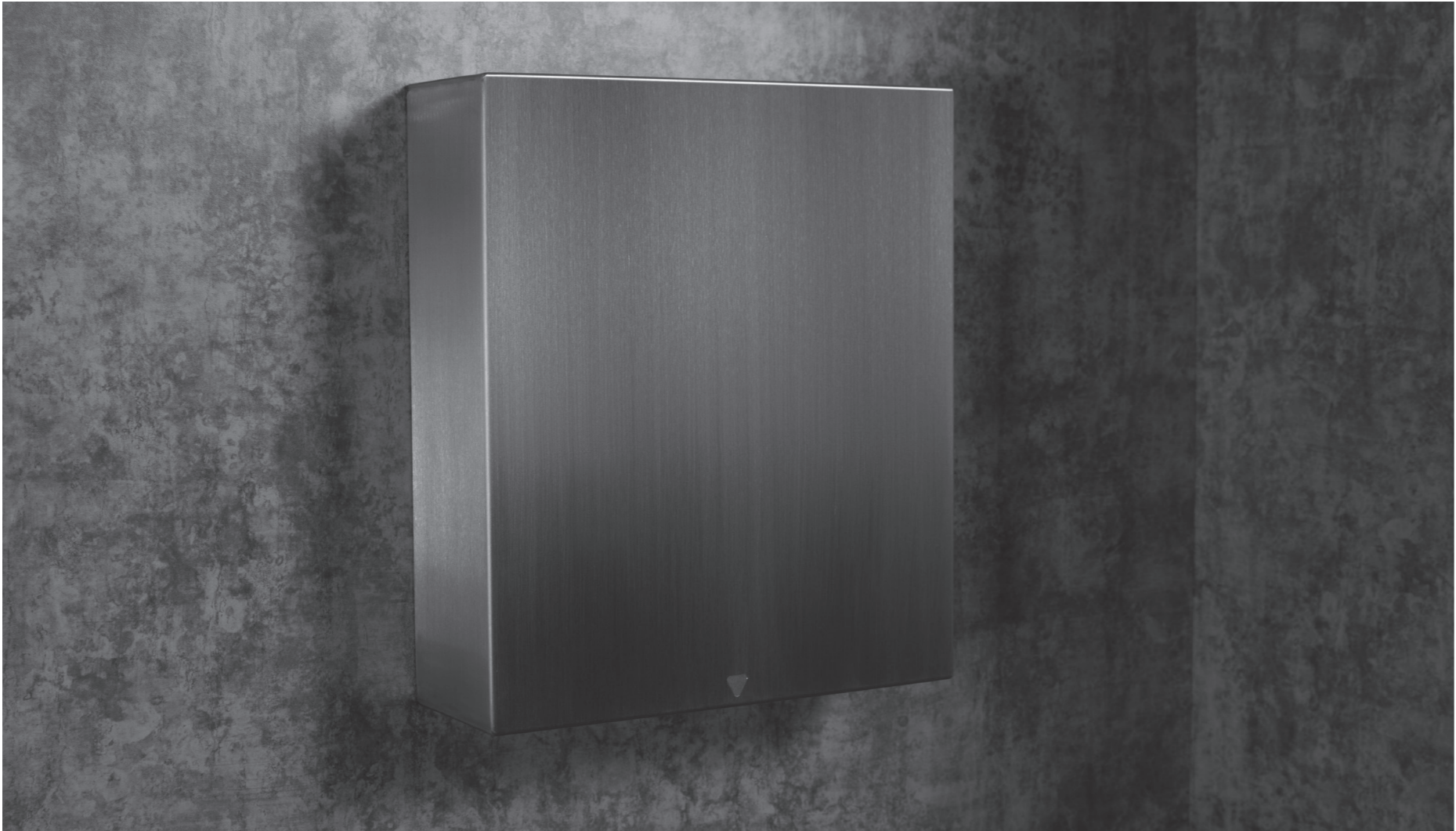
Material: Type 304, 18 gauge (1.2mm), stainless steel.

Finish: Satin finish as standard.

Made in: UK.



washroom accessories



Hand Dryer B-7179

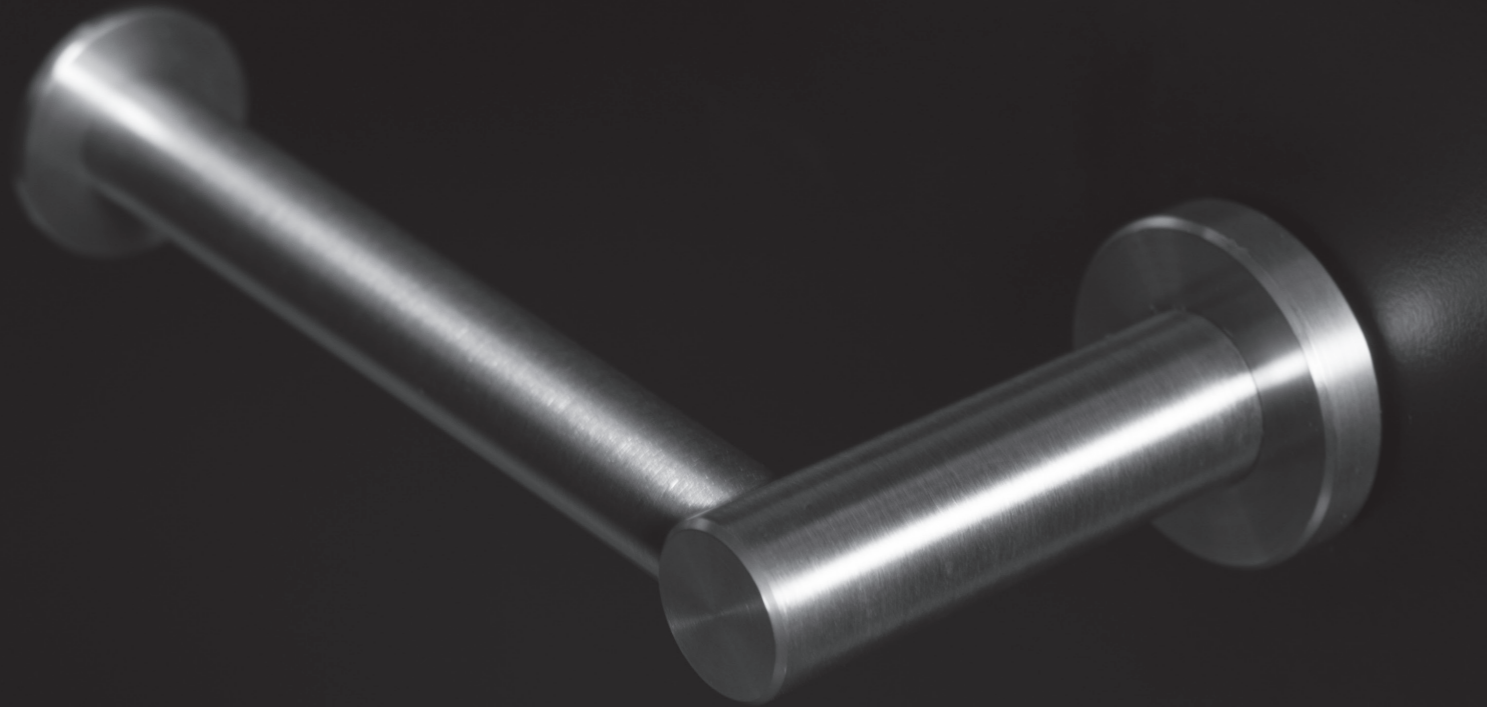


Towel Dispenser B-9262



Waste Bin B-9279

cubicle accessories



The Toilet Roll Holders and the matching Hook offer a subtle and residentially inspired design for inside the cubicle. Their cylindrical aesthetics are the perfect complement to the rest of the Fino Collection accessories.



Year Guarantee



Made in UK

Coat Hook B-9542

Specification: Machined stainless steel coat hook.
Height: 1 1/2" (37.5mm)
Depth: 2 1/2" (63.5mm)
Width: 1 11/32" (34mm)
Material: Type 303 stainless steel.
Finish: Satin finish as standard.
Made in: UK.



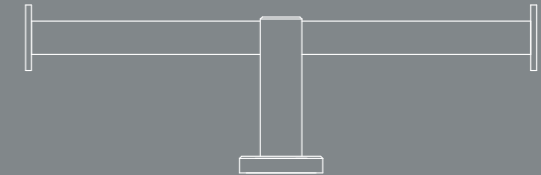
Single Roll B-9543

Specification: Machined stainless steel fixed single toilet roll holder.
Height: 1 11/32" (34mm)
Depth: 2 15/16" (75mm)
Width: 5 5/8" (142.5mm)
Material: Type 303 stainless steel.
Finish: Satin finish as standard.
Made in: UK.



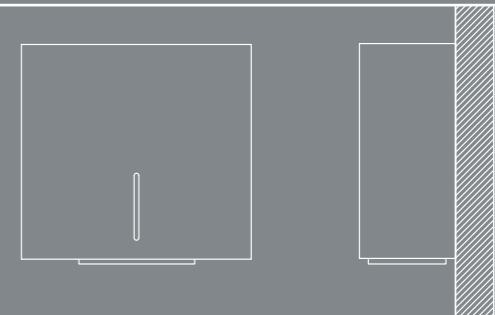
Double Roll B-9547

Specification: Machined stainless steel fixed double toilet roll holder.
Height: 1 11/32" (34mm)
Depth: 2 15/16" (75mm)
Width: 10 1/2" (266mm)
Material: Type 303 stainless steel.
Finish: Satin finish as standard.
Made in: UK.

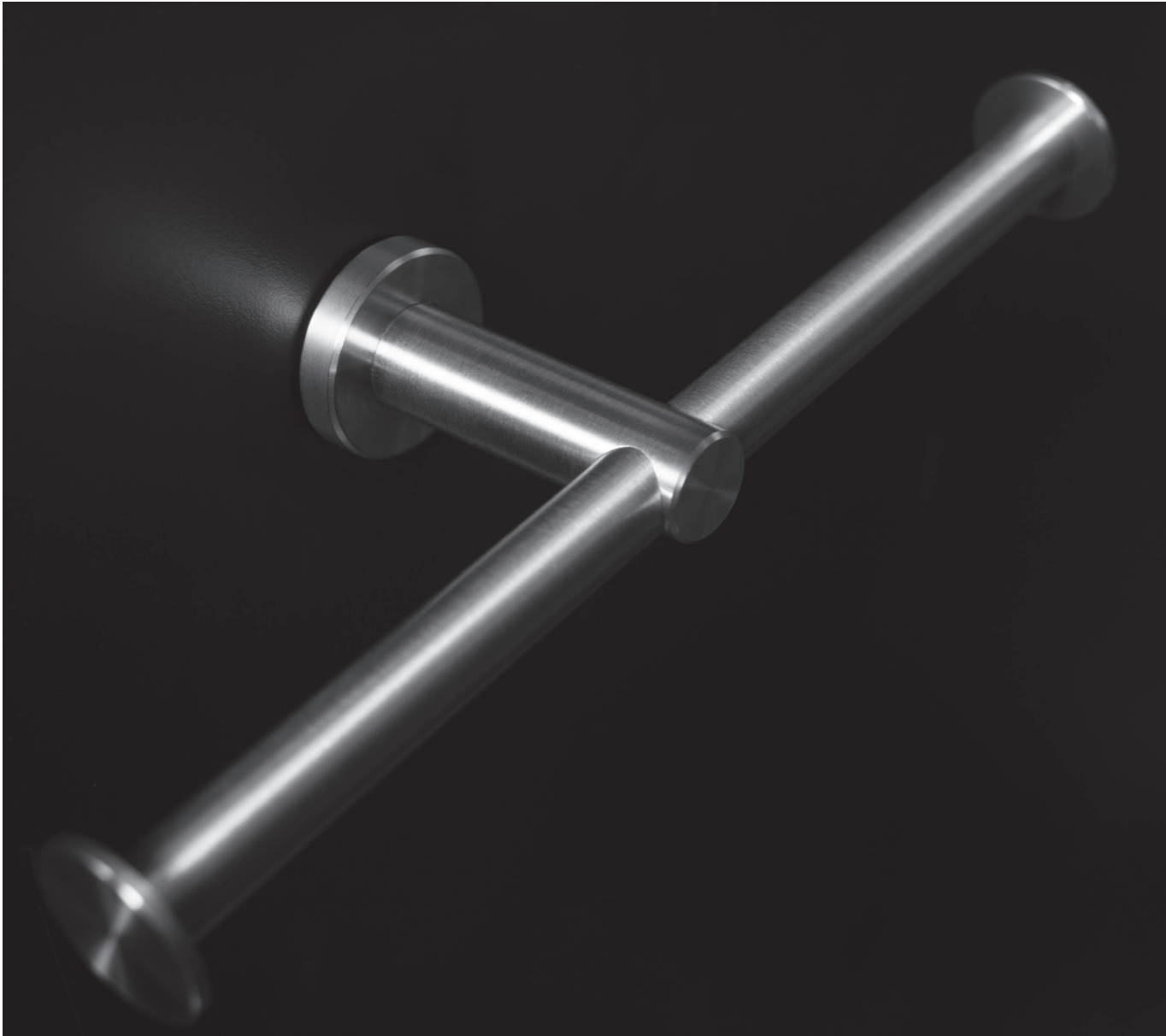


Jumbo Roll B-9890

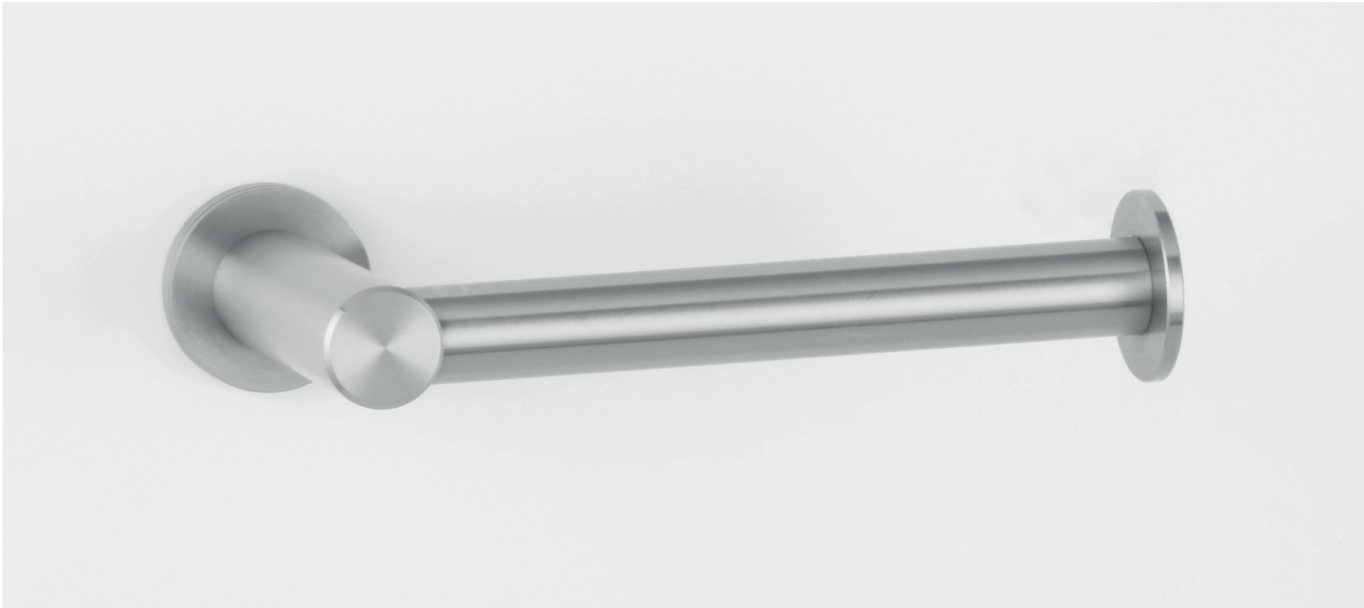
Specification: Stainless steel jumbo toilet roll holder with a flush lock.
Toilet Roll Size: Spindle holds up to 10" (255mm) diameter roll.
Width: 11 11/16" (297mm)
Height: 12 3/4" (324mm)
Depth: 5" (128mm)
Material: Type 304, 18 gauge (1.2mm), stainless steel.
Finish: Satin finish as standard.
Made in: UK.



cubicle accessories



Double Roll B-9547



Single Roll B-9543



Jumbo Roll B-9890



Coat Hook B-9542

grab bars

Our ADA/DDA compliant grab bars manufactured with 14 gauge (2mm) high quality stainless steel, machined flanges and hidden fixings, offer safety, beauty and a timeless design statement.



Year Guarantee



Made in UK

Grab Bar B-9806 (USA & Canada) B-9807 (International)

USA

Length options: 18", 24", 30", 36" or 42"
Depth: 1 1/2"

International

Length options: 457mm, 610mm, 914mm or 1066mm
Depth: 57mm

Custom lengths available upon request.

Specification: ADA/DDA compliant grab bars available in a range of lengths.

Tube Diameter: 1 1/2" (38.1mm)

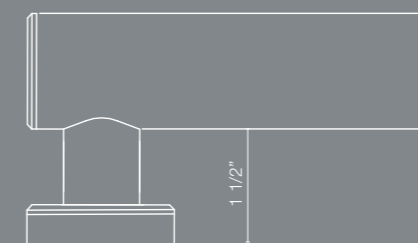
Gauge: 14 (2mm)

Body Material: Type 303 stainless steel.

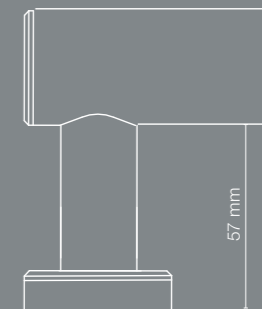
Finish: Satin finish and matte black as standard.



USA & Canada: B-9806



International: B-9807

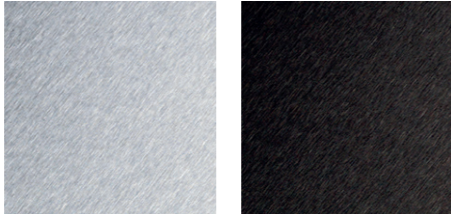


finishes

All Fino accessories come in stainless steel with satin finish as standard. We also offer 4 PVD finishes and a variety of powder coated options to choose from.

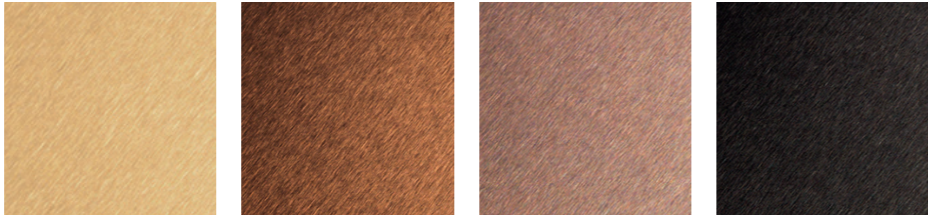
standard

All our products come in stainless steel with satin finish and matte black as standard.



pvd

Available in brass, copper, bronze and black. Physical Vapor Deposition is a coating technique produced in a vacuum that vaporises the coating material into a thin film of atoms onto our stainless steel. PVD coating is both incredibly durable and easy to clean, but also very environmentally friendly, much more so than traditional coating techniques.



powder coated

As a special order all of our range can be powder coated to any specified Pantone or RAL colour.



Bobrick.com

U.S. Corporate Office	818.982.9600	customerservice@bobrick.com
Canadian Offices	877.423.6555 Eastern Canada	customerservice@bobrick.com
	877.423.6444 Western Canada	
International Customer Service	+1.818.764.1000	international@bobrick.com
UK & Europe	+44 0208 366 1771	uksales@bobrick.com euoffice@bobrick.com
Thrislington Cubicles A Division of Bobrick	+44 1244 520 677	sales@thrislington-us.com

Illustrations and descriptions herein are applicable to production as of the date of this catalog. The manufacturer reserves the right to, and does from time to time, make changes and improvements in designs and dimensions.

For product warranty information, including warranty conditions and limitations for Bobrick Washroom Accessories, Koala Kare Products Baby Changing Stations and other products, please visit bobrick.com.

Bobrick, Koala Kare and MICROBAN and other brand names are registered with the United States Patent and Trademark Offices and as trademarks in several countries throughout the world. For patent information, please visit bobrick.com/patents.